

Opium Eradication

Opium eradication is a part of the narcotics crop control strategy of the Royal Thai Government. Areas of responsibility are shared by various RTG entities are as follows:

- | | | |
|----------------------------------|----|--------------|
| 1. Royal Thai Army Region 3 | 28 | target areas |
| 2. Border Patrol Police Region 3 | 27 | target areas |
| 3. Provincial Police Region 5 | 7 | target areas |
| 4. Provincial/district units | 14 | target areas |
| Total | 76 | target areas |

The opium eradication campaign is jointly planned through the authority of the Royal Thai Army Region 3 and the Internal Security Operations Command (ISOC). The results of the 1999-2000 eradication campaign are as follows:

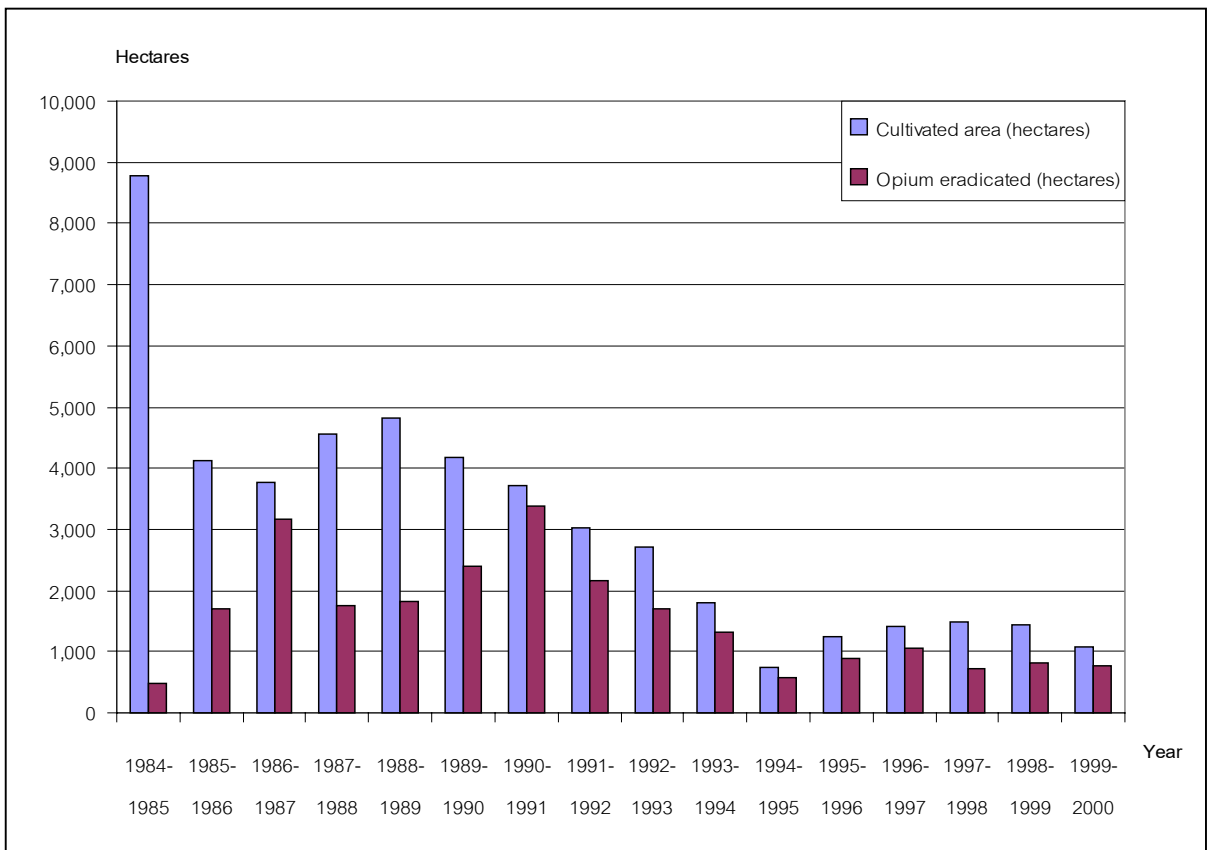
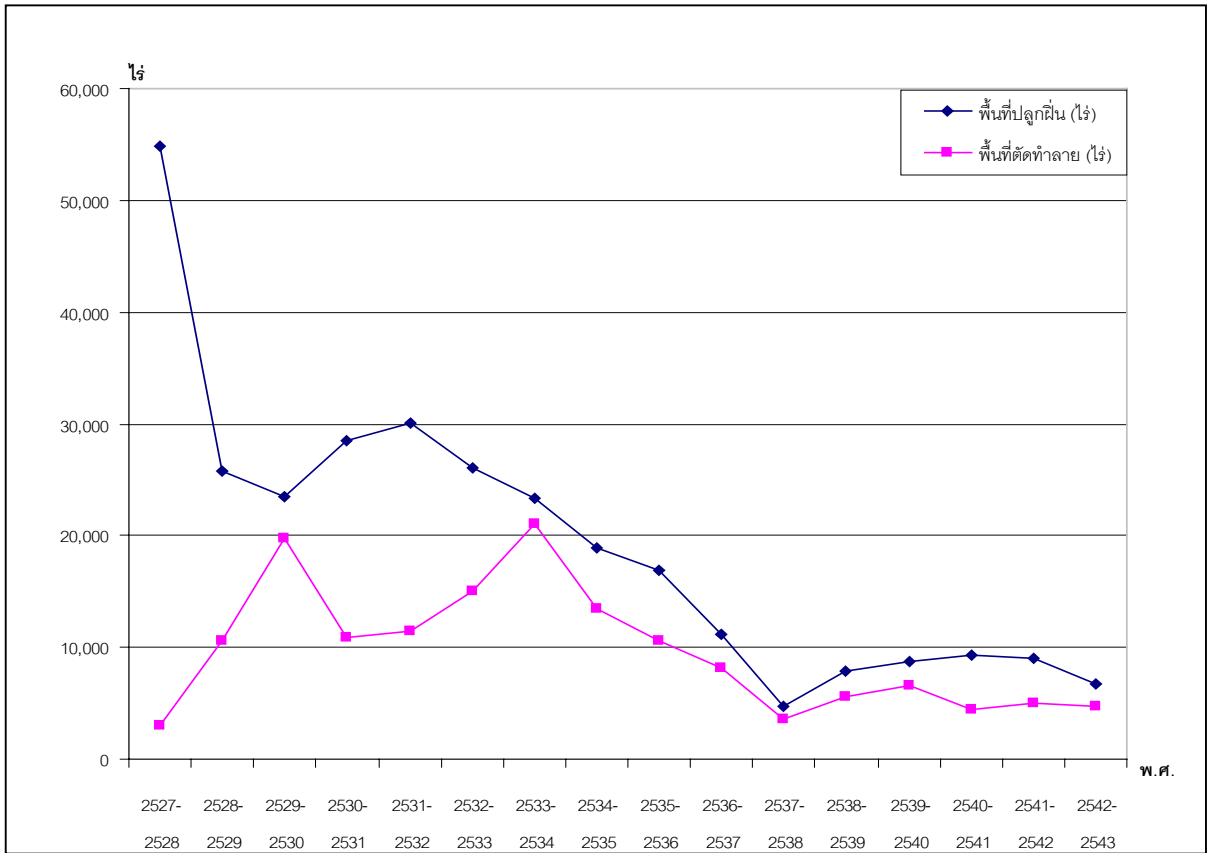
หน่วยตัดทำลาย <i>Eradication Units</i>	พื้นที่สำรวจ(ไร่) <i>Cultivated areas (ha)</i>	พื้นที่ตัดทำลาย (ไร่) <i>Opium eradicated (ha)</i>
1. กองทัพภาคที่ 3 <i>Royal Thai Army Region 3</i>	4,986.29 <i>797.80</i>	3,360.62 <i>537.70</i>
2. ตำรวจตระเวนชายแดน ภาค 3 <i>Border Patrol Police Region 3</i>	1,585.51 <i>253.68</i>	1,045.67 <i>167.31</i>
3. ตำรวจภูธรภาค 5 <i>Provincial Police Region 5</i>	117.60 <i>18.82</i>	* 217.35 * <i>34.78</i>
4. จังหวัด/อำเภอ <i>Provincial/district units</i>	106.80 <i>17.09</i>	* 110.85 * <i>17.73</i>
รวมทั้งสิ้น <i>Total</i>	6,796.20 <i>1,087.39</i>	4,734.49 <i>757.52</i>

* includes eradication outside of the designated target area

Result of the opium eradication campaign from 1984-1985 to 1999-2000

ปี <i>Year</i>	พื้นที่ปลูกฝิ่น (ไร่) <i>Cultivated area (hectares)</i>	พื้นที่ตัดทำลาย (ไร่) <i>Opium eradicated (hectares)</i>	คิดเป็นร้อยละ <i>% Erad</i>
2527-2528 <i>1984-1985</i>	54,854 <i>8,777</i>	3,000 <i>480</i>	5.47 <i>5.47</i>
2528-2529 <i>1985-1986</i>	25,789 <i>4,126</i>	10,613 <i>1,698</i>	41.15 <i>41.15</i>
2529-2530 <i>1986-1987</i>	23,470 <i>3,755</i>	19,768 <i>3,163</i>	84.23 <i>84.23</i>
2530-2531 <i>1987-1988</i>	28,443 <i>4,551</i>	10,877 <i>1,740</i>	38.24 <i>38.24</i>
2531-2532 <i>1988-1989</i>	30,100 <i>4,816</i>	11,460 <i>1,834</i>	38.07 <i>38.07</i>
2532-2533 <i>1989-1990</i>	26,109 <i>4,177</i>	14,970 <i>2,395</i>	57.34 <i>57.34</i>
2533-2534 <i>1990-1991</i>	23,295 <i>3,727</i>	21,076 <i>3,372</i>	90.47 <i>90.47</i>
2534-2535 <i>1991-1992</i>	18,854 <i>3,017</i>	13,422 <i>2,148</i>	71.19 <i>71.19</i>
2535-2536 <i>1992-1993</i>	16,906 <i>2,705</i>	10,664 <i>1,706</i>	63.08 <i>63.08</i>
2536-2537 <i>1993-1994</i>	11,198 <i>1,792</i>	8,209 <i>1,313</i>	73.31 <i>73.31</i>
2537-2538 <i>1994-1995</i>	4,680 <i>749</i>	3,622 <i>580</i>	77.39 <i>77.39</i>
2538-2539 <i>1995-1996</i>	7,839 <i>1,254</i>	5,537 <i>886</i>	70.64 <i>70.64</i>
2539-2540 <i>1996-1997</i>	8,784 <i>1,405</i>	6,581 <i>1,053</i>	74.93 <i>74.93</i>
2540-2541 <i>1997-1998</i>	9,286 <i>1,486</i>	4,472 <i>716</i>	48.15 <i>48.15</i>
2541-2542 <i>1998-1999</i>	9,007 <i>1,441</i>	5,051 <i>808</i>	56.08 <i>56.08</i>
2542-2543 <i>1999-2000</i>	6,796 <i>1,087</i>	4,734 <i>757</i>	69.66 <i>69.66</i>

Comparison of the area cultivated in opium with the amount of opium hectares eradicated from years 1984-1985 to 1999-2000



Late season opium cultivation

Late season opium cultivation begins toward the beginning of March and lasts until the end of May. ONCB has surveyed late season opium cultivation for the past several years and found that the main reason for late season opium cultivation is to avoid eradication. The methodology used for the late season opium survey is the same as that used to locate the regular season crop. Late season cultivation primarily

occurs near a water source which allows for the use of sprinklers.

Most late season cultivation occurs in Mae Chaem district of Chiang Mai province and Mae La Noi district of Mae Hong Son province. Most of the cultivation results in high-density growth owing to the proximity to water resources, isolation of fields and provision of necessary inputs such as fertilizer and water sprinkler systems by drug financiers. In the recent year found 51.2 ha and average yield was 12.5 – 15.625 kg/ha.