

Opium Survey Methodology

The 1999-2000 opium cultivation survey took place from August 1999 until May 2000. A total of 76 potential opium-growing areas were targeted using both ground and aerial survey methods.

Ground Survey

The ground survey focused on 20 potential opium-growing sites which were easily accessible high-density areas with a history of multiple cropping. The survey teams utilized 1:50,000 and 1:250,000 topographic maps, Global Positioning System (GPS) receivers, video and still cameras and panoramic and satellite images to collect data. They also collected information on cultivation techniques, price and yield through interviews with hilltribe farmers and other key informants. This information was later transferred to the survey database system for verification by aerial survey. In addition, ground teams added updated data on roads and villages to the survey database.

Aerial Survey

The aerial survey was supported by helicopter units from the Royal Thai Police Aviation Division and the Royal Thai Army. The aerial survey covered all 76 potential highland target areas. Still and video photo images were taken from the helicopters. A laptop computer with a GEOLINK GPS program simultaneously recorded the flight routes for later analysis. This method was developed by ONCB. Upon return to the ONCB computer center in Chiang Mai, the image processing system (IPS) processed the data which was used to plot the locations and size of the opium fields. Calculations were then loaded into the Geographic Information System (GIS).

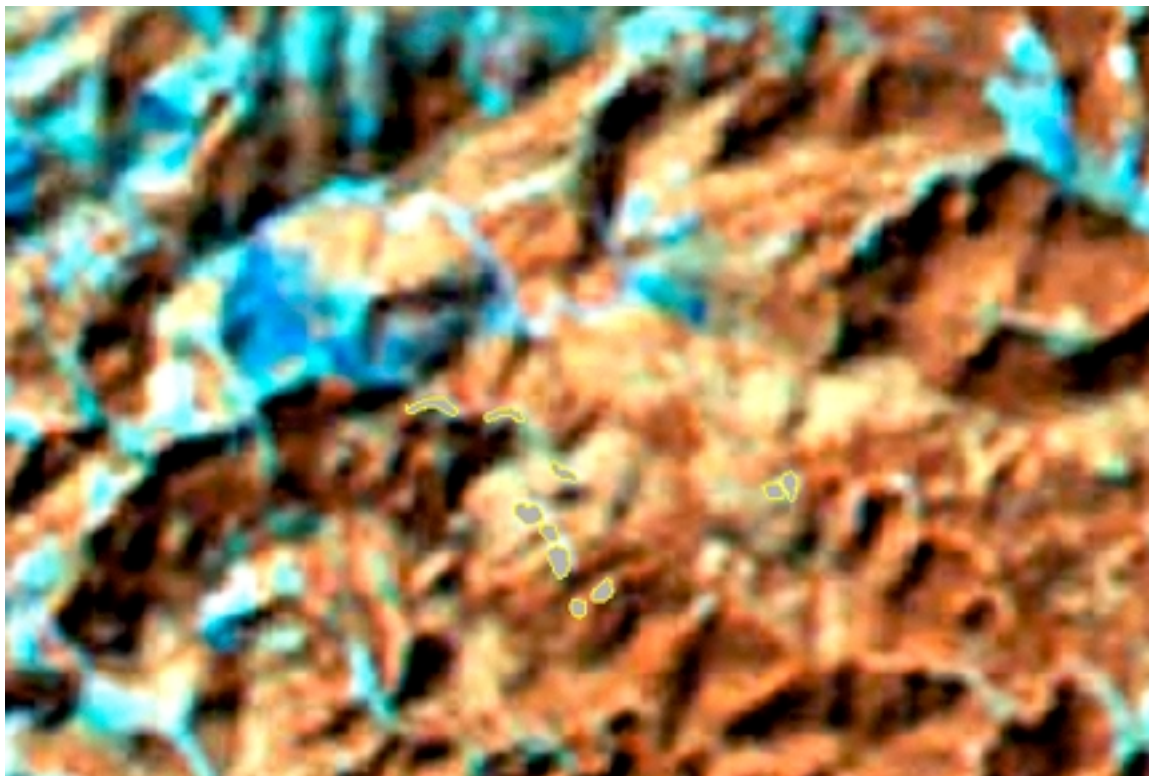
ONCB used 9 LANDSAT TM and SPOT satellite images for the opium cultivation database.

1. LANDSAT TM satellite images (8):

- Path 129 Row 047 acquired 24 Jan 1999
- Path 129 Row 048 acquired 24 Jan 1999
- Path 130 Row 046 acquired 04 March 1999
- Path 130 Row 047 acquired 04 March 1999
- Path 130 Row 048 acquired 16 Feb 1999
- Path 131 Row 046 acquired 06 Jan 1999
- Path 131 Row 047 acquired 22 Jan 1999
- Path 131 Row 048 acquired 22 Jan 1999

2. SPOT4 satellite images (1) :

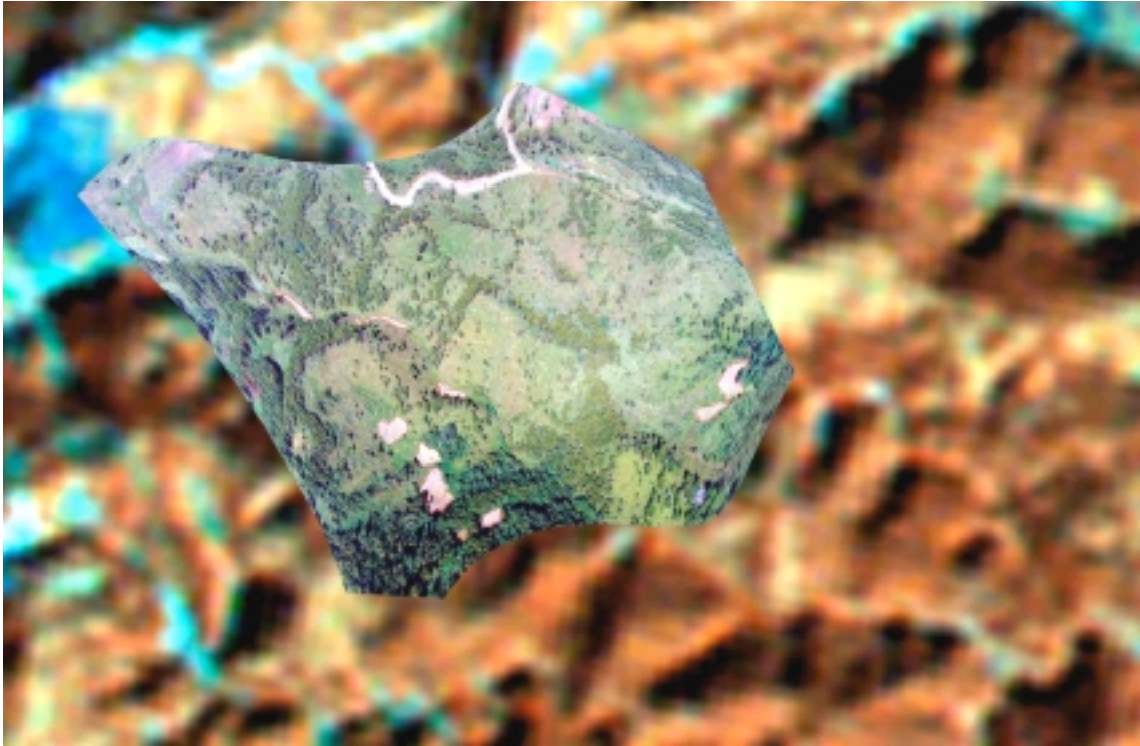
- K 254 J 316 acquired 12 Feb 2000



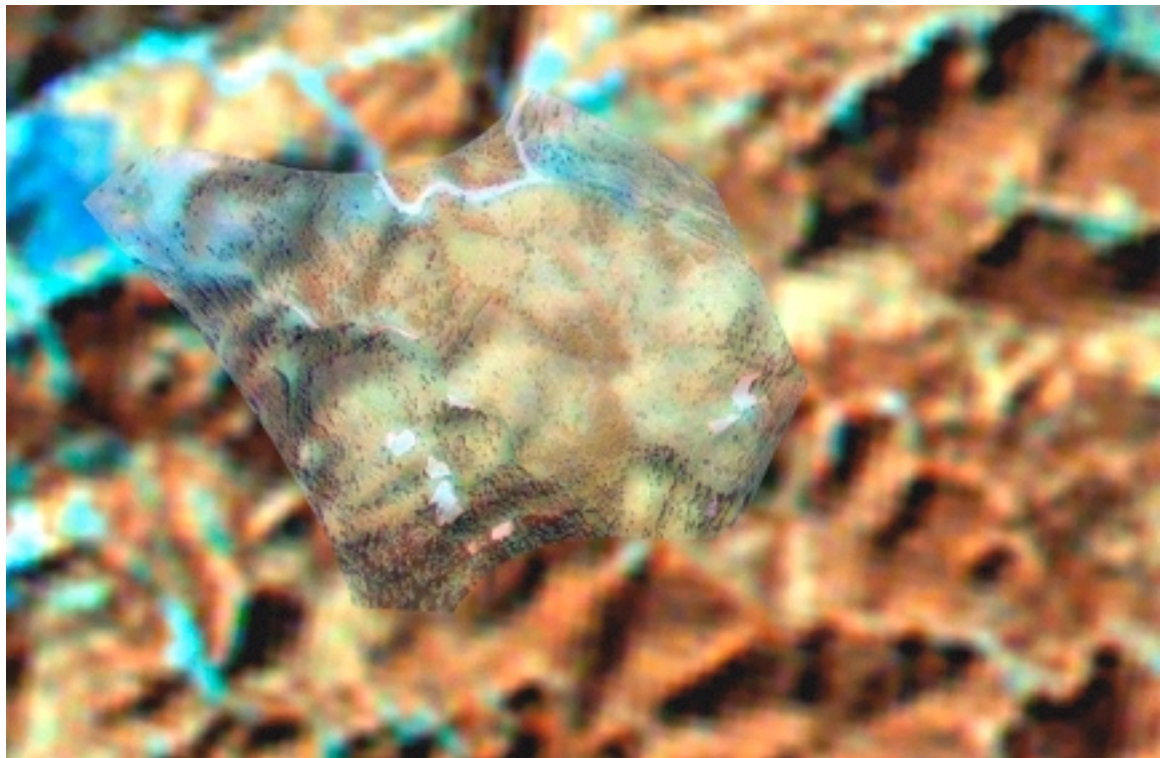
Landsat TM satellite image acquired on 25 Jan 2000 at Mae Tae highland unit, Chiang Dao district, Chiang Mai province MB758573



Photograph taken from helicopter on 3 Dec 1999 at the same area of satellite image above



Aerial photo overlaid on Landsat TM satellite image



Transparent aerial photo on Landsat TM satellite image for verification of opium poppy plots